

POLI-TAPE

HEAT TRANSFER VINYL



POLI-FLEX[®] PEARL GLITTER

STANDARD

450 SILVER



451 GOLD



425 LIGHT GOLD



429 DARK GOLD



426 COPPER



456 RED



487 CORAL



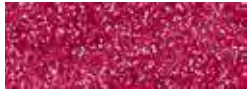
422 BURGUNDY



432 HOT PINK



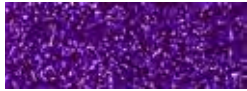
457 PINK



428 LAVENDER



424 PURPLE



445 SKY BLUE



454 BLUE



489 ROYAL BLUE



423 NAVY BLUE



483 LIGHT GREEN



455 GREEN



482 JADE



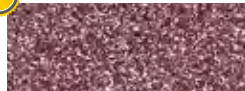
427 EMERALD



452 BRONZE



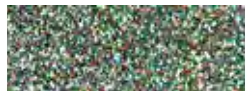
486 ROSE GOLD



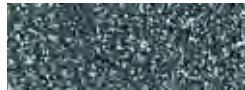
490 CHAMPAGNE



453 MULTICOLOR



459 GREY



458 BLACK



444 WHITE



488 RAINBOW WHITE



NEON

481 NEON BLUE



446 NEON YELLOW



447 NEON GREEN



448 NEON PINK



480 NEON PURPLE



449 NEON ORANGE





160°C



15 SEC



2,5 BAR



WARM



60°C
TUMBLE DRY
DRY CLEANING



SPARKLING



OEKO-TEX®
CONFIDENCE IN TEXTILES
STANDARD 100
07.0.50430 HOHENSTEIN HTTI
Tested for harmful substances.
www.oeko-tex.com/standard100



500 MM X 25 M
500 MM X 10 M

Please find detailed information in the technical data sheet | Detaillierte Informationen entnehmen Sie dem technischen Datenblatt

#BeCreative

POLI-FLEX® TURBO
POLI-FLEX® PREMIUM
POLI-FLEX® PEARL GLITTER
TUBITHERM® FLOCK
POLI-FLEX® IMAGE
POLI-FLEX® BLOCKOUT SOFT
POLI-FLEX® NYLON
POLI-FLEX® SPORT
POLI-FLEX® STRETCH
POLI-FLEX® PRINTABLE
TURBO PRINT
ULTIMATE PRINT



YouTube



HEAT TRANSFER VINYL'S 4 every challenge

TURBO PRINT 4036 MATT is the printable polyurethane transfer vinyl equipped with the same special hotmelt and features like POLI-FLEX® TURBO

TURBO PRINT 4036 MATT ist die bedruckbare Polyurethan Transferfolie mit dem selben speziellen Heißschmelzkleber und Eigenschaften wie POLI-FLEX® TURBO

130°C
5 SEC